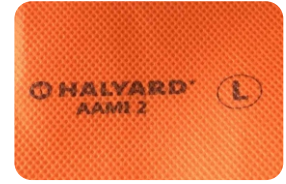
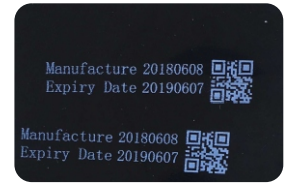
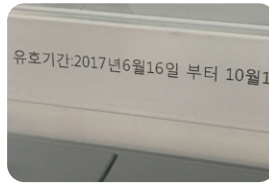




LEAD TECH

Thermal inkjet system

X1 Dual-mode inkjet printer



Based on Thermal inkjet, a portable and easy-to-operate jet printing equipment is developed, which is suitable for jet printing of flat object identification and provides simple jet printing equipment for production enterprises.



Lightweight and compact, with excellent functions, good printing results, high resolution, to provide you with an unexpected printing experience

- One host with multiple combinations
- Intelligent operation system
- Double power mode

1 inch printhead

Half an inch printhead ,more than bigger
Meet your demand for big font

one host,two different functions*

Handheld /On line can switch easily
Saving money and better to solve application problem

One host, two signal modes

Optional built-in / external trigger information source
More suitable for different situation

Intelligent operation system

Linux operation surface,Easy to learn, easy to understand,
easy to operate

Double power mode

Two modes:Battery and External power, Continue working
without power los

All-metal contact surface

Open 10° on both sides to prevent spoiling of the product
Smoothly Surface treatment process

Full metal contact, durable and easy to clean

*According to the actual situation, you can choose the handheld kit or online kit or buy two kits at the same time, and switch freely according to different scenes.

